

**CAPACITORS**

- C1 XX
- C2 XX
- C3 470uF
- C4 100nF
- C5 XX
- C6 1uF
- C7 2.2uF

**SEMICONDUCTOR**

- D1 1N4001

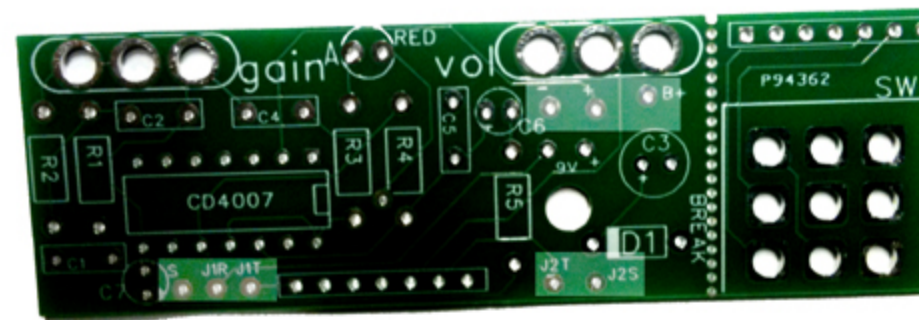
**RESISTORS**

- R1 XX
- R2 22K
- R3 10K
- R4 2.2M
- R5 1M

VOLUME A100K

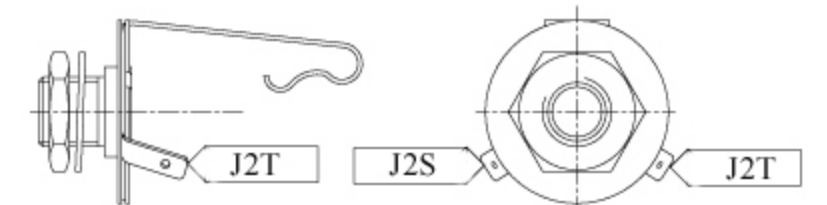
GAIN A100K

**WIRE CONNECTIONS  
HIGHLIGHTED AREAS**

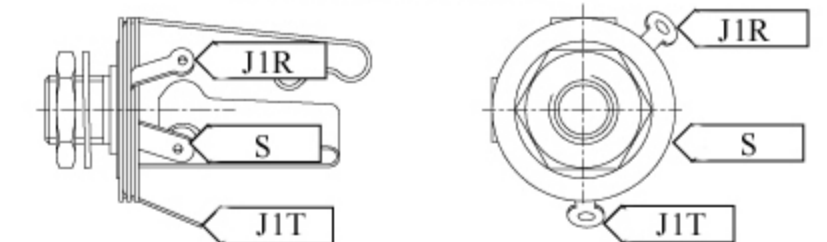


THIS SYMBOL "" REPRESENTS A JACK TO BOARD WIRE CONNECTION.

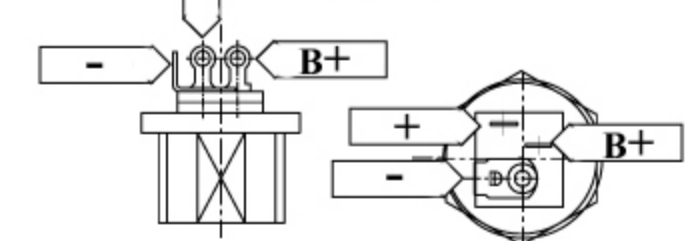
**MONO JACK OUTPUT**



**STEREO JACK INPUT**



**DC JACK**



Catalinbread		
V8 FUZZTONE GENERATOR		
	Rev 1.0	2004-2012
	10/31/2011	