

CAPACITORS

- C1 22nF
- C2 100pF
- C3 470uF
- C4 47nF
- C5 470pF
- C6 1uF

SEMICONDUCTOR

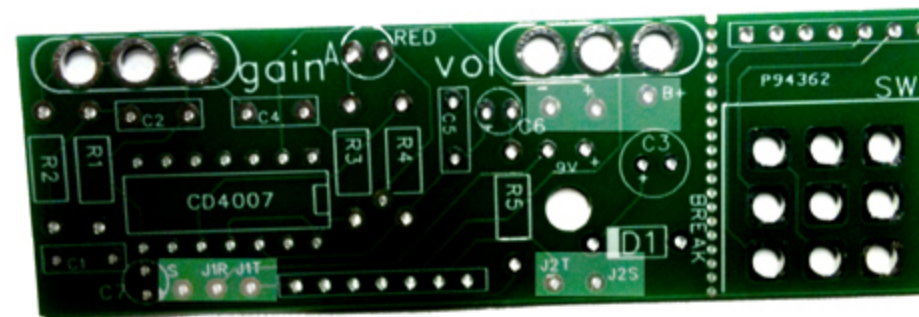
- D1 1N4001

RESISTORS

- R1 47K
- R2 47K
- R3 10K
- R4 2.2M

- VOLUME A100K
- GAIN A1M

WIRE CONNECTIONS
HIGHLIGHTED AREAS



THIS SYMBOL "" REPRESENTS A JACK TO BOARD WIRE CONNECTION.

Catalinbread		
HyperPak Dirty Channel		
	Rev 1.0	2004-2012
	10/31/2011	